

# Sage MAS 500 ERP

Save time. Do more. Grow faster.

## Sage MAS 500 Version 7.3

For more than a decade, Sage MAS 500 ERP has delivered comprehensive functionality and business intelligence to help midmarket enterprises improve efficiency and productivity while reducing operational costs.

Sage MAS 500 Version 7.3 builds on that foundation by setting new standards for quality and reliability. The latest version introduces numerous usability enhancements that improve productivity and ease of use, and technology updates that deliver support for the latest operating systems, database platforms, and virtualization. Significantly improved performance and scalability let you accomplish more with fewer resources, saving you time and money.

### NEW! Credit Card Processing

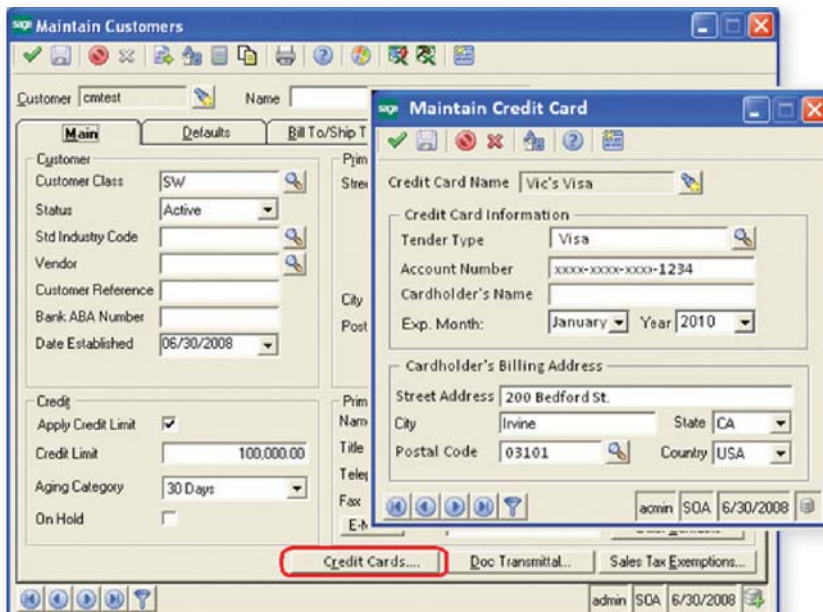
Process payments quickly and easily with the new Sage MAS 500 Credit Card Processing module, which allows you to initiate and manage credit card transactions from within the Sales Order, Accounts Receivable, and Cash Management modules. New features deliver advanced security and ease of use to support your payment processing needs.

The Credit Card Processing module's flexibility is accompanied by its powerful security options, which provide the peace of mind you need. Powerful encryption protects confidential credit card information, while address verification and card security code verification help protect you from fraudulent transactions.

Set up multiple credit card accounts for each customer. The Credit Card Processing module supports a variety of credit card types and processors (including Sage Payment Solutions).

Credit Card Processing features benefit many areas of your company:

- **Sales:** Down payments, multiple authorizations per order, and multiple credit cards per order.
- **Shipping:** Capture funds during shipping, reauthorize partial shipments, and flexible error handling.
- **Accounts Receivable:** Cash receipts, invoice payments, and refunds.
- **Customer Care:** Store transaction history and card information for future visits.



## BENEFITS

Process payments more easily with the new Credit Card Processing module.

Improve user productivity with the updated, customizable Sage MAS 500 Desktop.

Run the latest technology and virtualization platforms.

Make the inventory count process faster, more efficient, and more accurate.

Gain better insights into pending and posted inventory transactions.

Streamline sales order processing and workflow.

Make payments electronically (ACH), and avoid check fraud.

Work faster with significant performance improvements in data entry, processing, posting, and reporting.

- The new Credit Card Processing module delivers flexibility and ease of use, plus advanced security to protect confidential information.

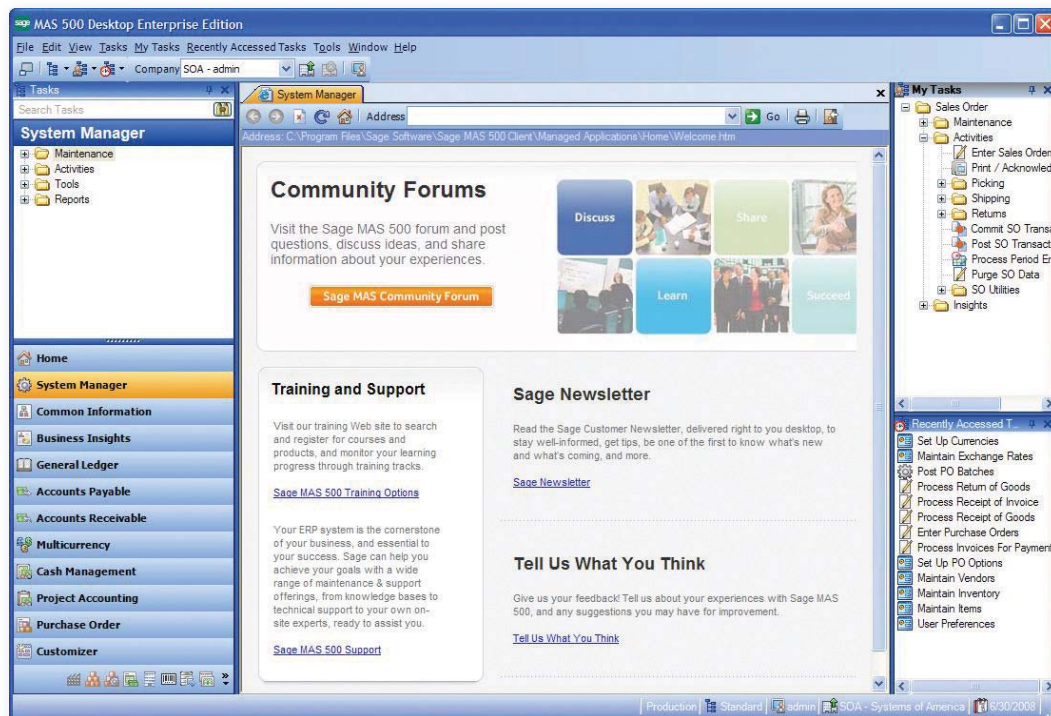


## Enhancements and Updates Throughout!

### Sage MAS 500 Desktop updated for greater control and easier access

The Sage MAS 500 Desktop has been updated with improved controls for task access and navigation, with a familiar Microsoft® Outlook® look and feel.

- Get faster access to the tasks you use most with a new Recently Accessed Tasks window.
- Personalize the Tasks Explorer Bar to deliver improved role-centric adaptability. Change the order of the module menu groups, and hide or show groups on the menu.
- Enjoy easier navigation by displaying the menus for one module at a time on the Tasks Explorer Bar, and choose from various styles on the View menu.
- Access the My Tasks Explorer Bar more easily. This navigation tool now appears on the right side of the Desktop by default and can be personalized by simply dragging tasks to the menu.
- Customize the content for each task group according to your business needs. Display Web pages, company policies, links to documents or Web sites, or workflow diagrams with links to launch Sage MAS 500 tasks.



### Platform support extended to include latest technologies

Version 7.3 includes support for some of the latest technology platforms, including Microsoft SQL Server® 2008 and Windows Server® 2008. Support has also been added for 64-bit versions of client and server operating systems and numerous virtualization platforms for increased flexibility.

### Expanded Data Migrator allows easy transition to Sage MAS 500

The Data Migrator now supports migrations from Sage MAS 90 and 200 version 4.10, so when users are ready to migrate to Sage MAS 500, they can do so easily.

### PDF document transmission provides increased security

Send important documents to vendors and customers without worrying about them being edited. Documents can now be generated and e-mailed in PDF format (in addition to RTF and HTML), which also improves efficiency since it eliminates the need to create PDFs separately.

## Inventory Management

### Improved Physical Count processes

The Inventory Physical Count process has been enhanced with significant workflow and user interface improvements to make the count process faster, more efficient, and more accurate. Improvements include a new grid entry, increased item selection criteria and sort order control, expanded filtering and reporting options, and the option to enter counts in Microsoft Excel® and import the counts back into Sage MAS 500.

### Added Business Insights Explorer views

The information you need is available at your fingertips. Several new Business Insights Explorer (BIE) views are now available to view pending and posted inventory transactions, including Pending Increase or Decrease Transactions, Pending or Posted Physical Counts, and previews of Pending Lots or Serial Numbers.

## Sales Order

### Improved shipment commit workflow

The shipment commit process has been enhanced to enable printing a pro-forma invoice before committing a shipment, so a printed invoice can be included in a shipment or quickly printed for counter sales and handed to a customer.

### Multiple credit card entry options

You'll appreciate the flexibility to enter credit card payment information in various Sales Order tasks, including Enter Sales Orders and Quotes, Edit Shipments, and Process Sales Orders.

### Cascade Sales Order line updates

In Sales Order Entry, updates to Ship To, Ship Via, and Delivery Method fields in the order header optionally cascade down to all open sales order line items, saving you time by eliminating the need to update line items individually.

## Accounts Payable

### Electronic Payments through Automated Clearing House (ACH)

Increase flexibility in your payment methods with the ACH feature, which lets you use electronic funds transfer (EFT) as an alternative to checks. The ACH feature supports both U.S. (NACHA) and Canadian (AFT) formats.

### New Positive Pay feature for increased security

Positive Pay provides a valuable tool in preventing check fraud by generating a file that is submitted to your financial institution to verify check information prior to payment. The bank processes the check only if check data matches the vendor's information.

### New vendor merge option

This new feature lets you eliminate duplicate vendor records by merging information from a "source" vendor into another "target" vendor, including all aging and history records.

"The new features in MAS 500 Version 7.3 are features that all customers will benefit from in the upgrade. They provide real world time saving steps that will help end users be more productive in their day to day operations. The performance improvements should be immediately noticed by customers upgrading from previous versions."

Matt Holland  
Practical Software  
Solutions

## Accounts Receivable

### New customer merge option

Eliminate duplicate customer records by merging a "source" customer into another "target" customer, including all aging and history records.

### New invoice merge option

Multiple shipments can be merged into a single invoice for easier billing and reduced paperwork.

### Additional credit card refund options

Processing credit card payment refunds becomes simple in Sage MAS 500 Version 7.3, which lets you conveniently issue refunds in the Process Cash Receipts and Process Invoices tasks.

## Significant System Performance Improvements

You'll notice improved productivity throughout your business when using Sage MAS 500 Version 7.3, thanks to considerable system performance enhancements.

Compared to the initial release of version 7.2, version 7.3 performance improvements include:

- **Create and Process Sales Order** can process **90% more transactions per second**
- **Create Invoice** task can process **100% more transactions per second**
- **Create Purchase Order** task can process **50% more transactions per second**
- **Create Vouchers** task can process **200% more transactions per second**
- **Create Journal Entry** can process **60% more transactions per second**
- **Cash Receipts Entry** load and process is up to **99% faster** on large loads
- **Enter Sales Order and Print Invoice** is approximately **75% faster**
- **Sales Order Shipment Commit** is approximately **70% faster**
- **Manufacturing Work Order Posting** is up to **95% faster** on large postings
- **Manufacturing Labor Transaction Posting** is up to **89% faster** on large postings
- **Crystal Reports®** performance has been improved significantly

## About Sage North America

Sage North America is part of The Sage Group plc, a leading global supplier of business management software and services. Sage North America employs approximately 4,100 people and supports nearly 2.9 million small and medium-size business customers. The Sage Group plc, formed in 1981, was floated on the London Stock Exchange in 1989 and now employs 14,500 people and supports 5.8 million customers worldwide. For more information, please visit the Web site at [www.sagenorthamerica.com](http://www.sagenorthamerica.com).